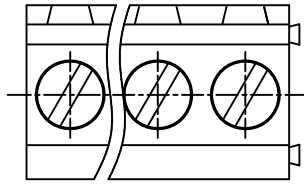
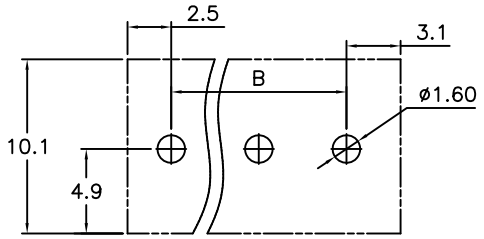
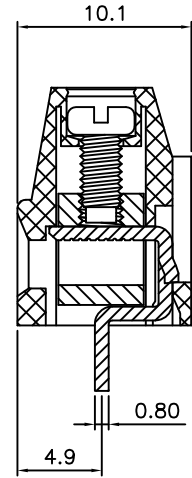
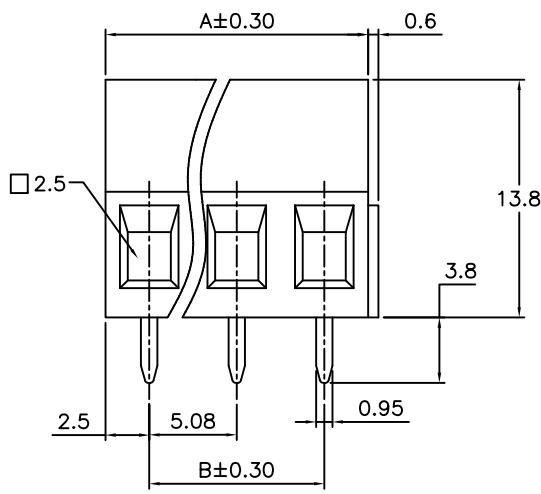


REV.	SPECIFICATION	ECN NO.	APPD.



Material:
Housing: Thermoplastic Polyester Glass Filled UL94V-0.
Solder Pin: Copper Alloy, Tin Plated.
Clamp: Copper Alloy, Ni Plated.
Screw: Metal, Zinc Plated, M2.5

Electrical Characteristics:
Voltage Rating: 300V.
Current Rating: 10A.
Solid Wire(AWG): 12-24.
Stranded Wire(AWG): 12-24.
Torque(Lb-In): 3.5.
Wire Strip Length: 6-7mm.
Withstanding Voltage: 1.6KV.
Operating Temperature: -40°C~+115°C.
***RoHS Compliant**



P.C. Board Layout

8932- G 101138 G AA xx S B
Series G:Pitch Manufacturing G:Green AA:Slotted No. of S:Straight B:Bulk
5.08mm Code "-Screw Positions Package

Position	2 Thru 24
Dimension	
A	No. of PositionsX5.0
B	(No. of Positions-1)X5.0

Tolerances	Dwg. No.	8932D02015	Title:	
x = ±0.50	Projection		8932 Series	
.x = ±0.30	Unit	mm	Scale	1:1
.xx = ±0.15	Drawn By	Vic Lyu01/07'15	5.08mm Terminal Block	
			(Old P/N:8500-XXTS11-03)	

① 780

OUPIN			
OUPIN ELECTRONIC(KUNSHAN) CO., LTD.			
P/N: 8932-G101138GAxxSB			
SHEET	1/1	Ver.No.	X2