

REV.	SPECIFICATION	ECN NO.	APPD.

Material:

Housing: LCP, UL94V-0, Black.

Contact: Phosphor Bronze, Gold Plated on Contact Area and Gold Flash on Solder tail over Nickel.

Solder Tab: Phosphor Bronze, Gold Flash on Solder tail over Nickel.

Electrical Characteristics:

Current Rating: 0.3 AMP.

Voltage Rating: AC 60V.

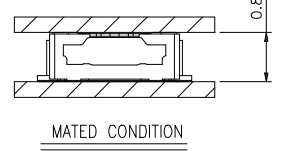
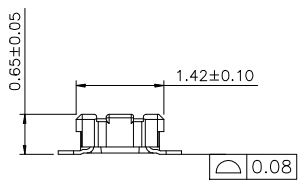
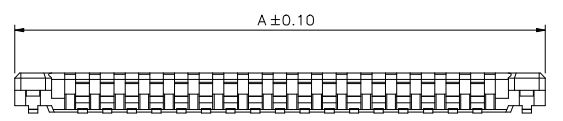
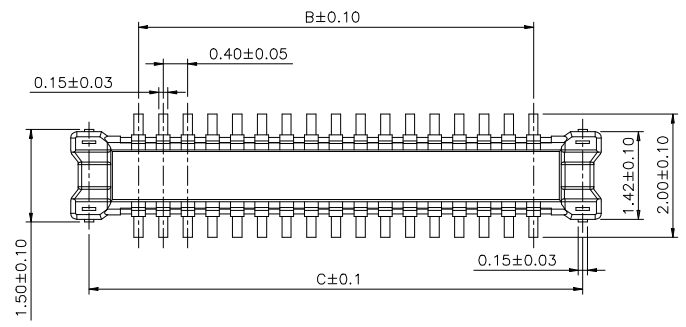
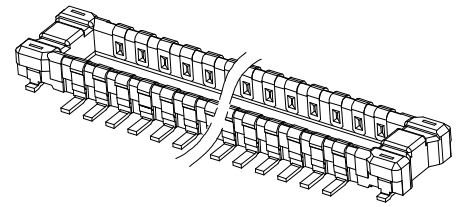
Dielectric Withstanding Voltage: AC 150V.

Insulation Resistance: 1000MΩ min.

Contact Resistance: 90mΩ max.

Operating Temperature: -55°C~+85°C.

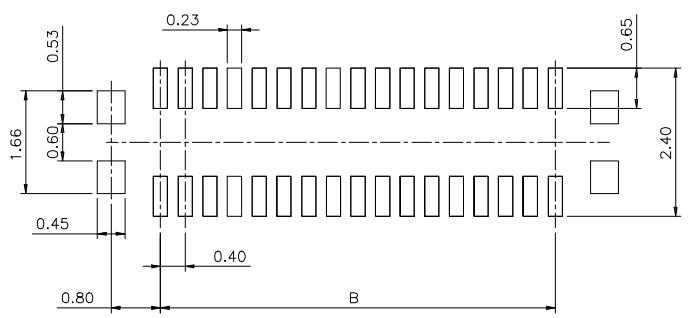
***RoHS Compliant**



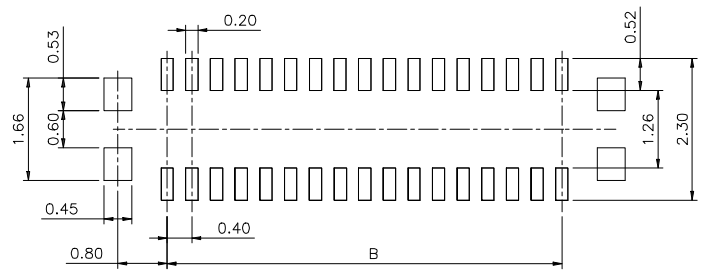
2379- xx M G 00 D N T

Series ————
 No. of Positions ————
 M: Male ————
 G: Gold Plated ————

T: Tape & Reel Package
 N: Without Post
 D: SMD Type
 00: Gold Flash



P.C. BOARD LAYOUT (NO PATTERNS)
TOLERANCE: ±0.02



RECOMMENDED METAL MASK LAYOUT (NO PATTERNS) t=0.08mm
TOLERANCE: ±0.01

"*" Available Position				
Positions	A	B	C	
10	3.80	1.60	3.20	
16	5.00	2.80	4.40	
24	6.60	4.40	6.00	
30	7.80	5.60	7.20	
34	8.60	6.40	8.00	
*	40	9.80	7.60	9.20
	50	11.80	9.60	11.20
	60	13.80	10.60	13.20

Tolerances	Dwg No.	S2320201124-02		Title:	
.x = ±0.25	Projection			2379 Series	
.xx = ±0.15	Unit	mm	Scale	Pitch 0.4mm Male	
.xxx = ±0.10	Drawn By	Emma	12/01'20	Board to Board Connector	
			①567		

OUPIIN			
OUPIIN ELECTRONIC(KUNSHAN) CO., LTD.			
P/N: 2379-xxMG00DNT			
SHEET	1/1	Ver.No.	X1