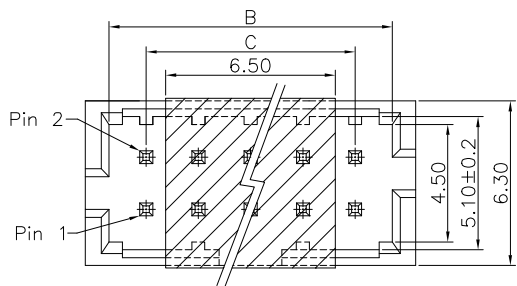
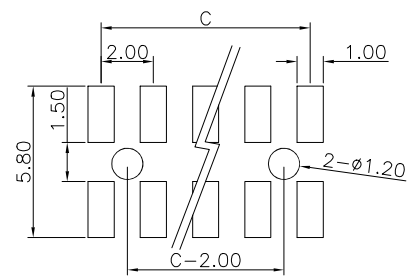
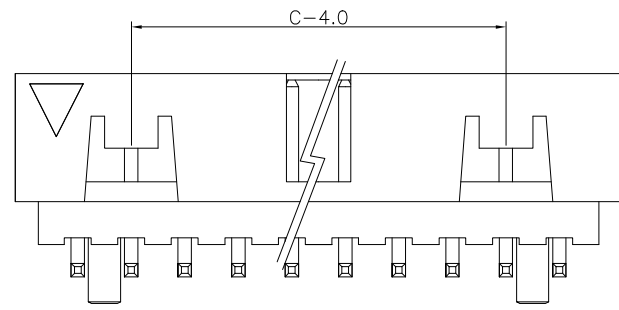
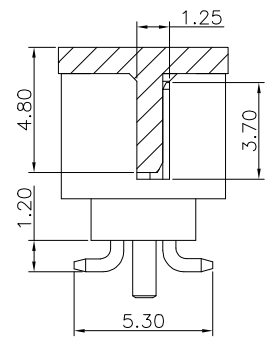
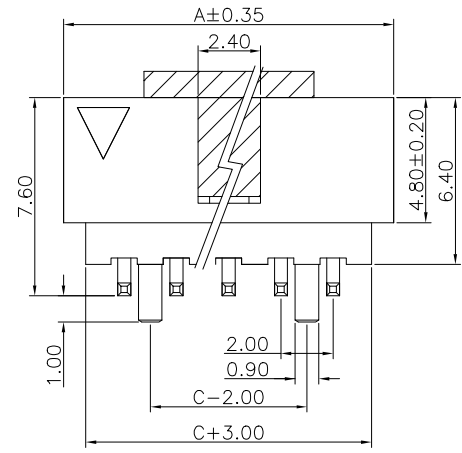


REV.	SPECIFICATION	ECN NO.	APPD.



**Material:**  
Housing: PA6T, UL94V-0.  
Contacts: Brass, Gold Plated on Contact Area and Solder Tail over 50u" Nickel.

**Electrical Characteristics:**  
Current Rating: 1 AMP.  
Dielectric Voltage: AC 500V.  
Insulator Resistance: 5000MΩ min.  
Contact Resistance: 20mΩ max.  
Operating Temperature: -40°C~+125°C.  
**\*RoHS Compliant**  
No Side Locking Slot from 8 to 12 Position



P.C. Board Layout

3112- 2 X xx G xx D x B x -x

Series ———  
Double Row ———  
No.of Pin per Row ———

03 10  
04 12  
05 13  
06 14  
07 17  
08 20  
09 22

G: Gold Plated  
00: Gold Flash  
10: 10u"  
15: 15u"  
30: 30u"

D: SMD Type

Blank: Without Pad  
P: With Pad  
U: Tube Package  
T: Tape & Reel Package  
B: Black  
N: Without Post  
P: With Post(Only for 2X04~2X22)

Positions	A	B	C
2X03	8.65	6.85	4.00
2X04	10.65	8.85	6.00
2X05	12.65	10.85	8.00
2X06	14.65	12.85	10.00
2X07	16.65	14.85	12.00
2X08	18.65	16.85	14.00
2X09	20.65	18.85	16.00
2X10	22.65	20.85	18.00
2X12	26.65	24.85	22.00
2X13	28.65	26.85	24.00
2X14	30.65	28.85	26.00
2X17	36.65	34.85	32.00
2X20	42.65	40.85	38.00
2X22	46.65	42.85	42.00

<b>Tolerances</b>	<b>Dwg. No.</b>	3112D01009		<b>Title:</b>
.x = ±0.50	<b>Projection</b>	⊕ ↗		3112 Series
.xx = ±0.30	<b>Unit</b>	mm	<b>Scale</b>	Box Header 2.0mmX2.0mm
	<b>Drawn By</b>	Martin	10/30'24	SMD Type

<b>OUPIIN</b>			
OUPIIN ELECTRONIC(KUNSHAN) CO., LTD.			
<b>P/N:</b>	3112-2XxxGxxDxBx-x		
<b>SHEET</b>	1/1	<b>Ver.No.</b>	A4