

REV.	SPECIFICATION	ECN NO.	APPD.
R3			

**Material:**

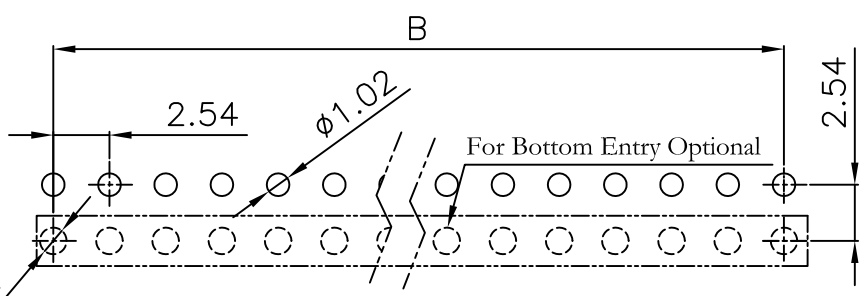
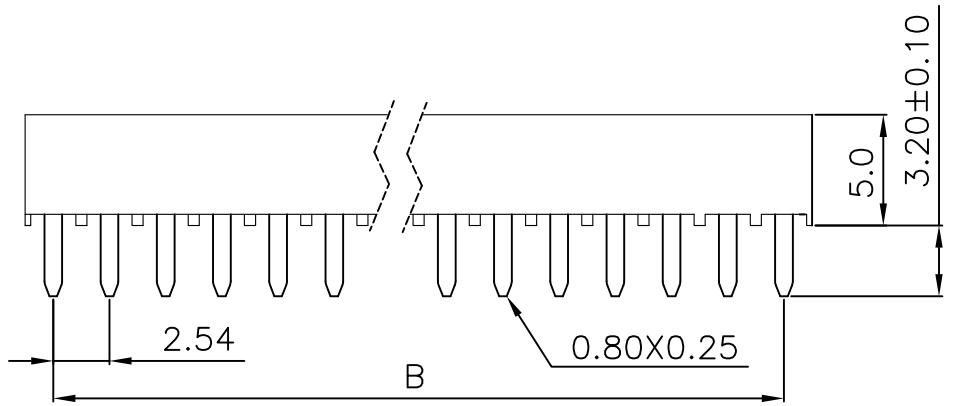
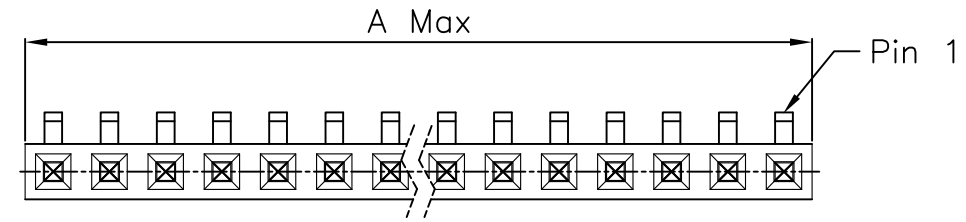
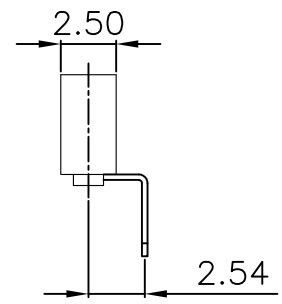
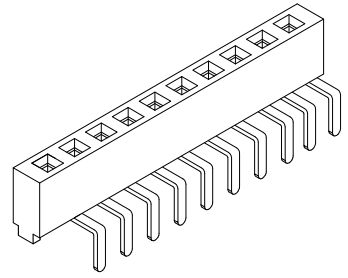
Housing: Thermoplastiv Polyester Glass Filled UL94V-0.  
 Contacts: Copper Alloy.

**Electrical Characteristics:**

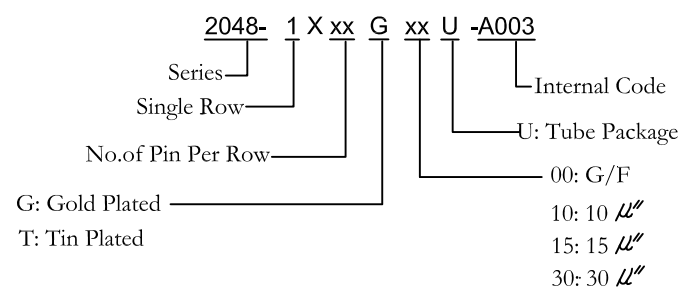
Current Rating: 2 AMP.  
 Dielectric Withstanding Voltage: AC 1000V For 1 minute.  
 Insulator Resistance: 1000MΩ min. at DC 500V.  
 Contact Resistance: 20mΩ max. at DC 100mA.  
 Operating Temperature: -55°C~+105°C .

**\*RoHS Compliant**

Insertion Depth: 2.55mm to 4.50mm.  
 Bottom Entry Insertion Depth: 4.55mm min.  
 (Excluding PCB Thickness).



P.C. Board Layout  
 (Tolerance: ±0.05mm)



Position	2 Thru 40
Dimension	
A	2.54 X No. of Positions
B	2.54 X No. of Positions -2.54

Tolerances	Dwg. No.	2048-D0000-008	Title:	
x = ±0.5	Projection		2048 Series	
.x = ±0.25	Unit	mm	P.C.B. Socket 2.54mm	
.xx = ±0.15	Scale	1:1		
	Drawn By	Zhu QL 12/04'12		

<b>OUPIN</b>			
OUPIN ELECTRONIC(KUNSHAN) CO., LTD.			
P/N: 2048-1XxxGxxU-A003			
SHEET	1/1	Ver. No.	R3